

Reorganization of Historic Records Related to Cain Park

Final Progress Report

The City of Cleveland Heights
Cleveland Heights, Ohio
August 30, 2012

The reorganization of the Cain Park records is complete. After the grant was awarded, work began immediately to organize and preserve five boxes of key material, as well as twenty-three scrapbooks and approximately 560 slides. According to our initial grant proposal our objectives were as follows:

“Phase Two: Reorganization and Preservation will focus on reorganizing the collection to be user-friendly. While rearranging the materials, items will be placed in well-labeled, archival-safe boxes to help preserve the records. Efforts will focus on 8 boxes dating from the park’s first forty years because they are the most unorganized, in the greatest need of preservation and those that are most requested by residents and former participants in Cain Park performances. Phase Two will:

- reorganize the collections as needed (group like items together, locate loose items in appropriate boxes);
- scan disorganized slides in order to identify and determine correct placement in collection;
- place the collection in archival folders/boxes starting with the oldest/most deteriorated materials first;
- winnow the collection (remove multiple copies of items and put in safe storage);
- update finding aids to reflect the reorganization of materials; and
- create a plan, time table and possible funding resources for Phase Three: Digitization/Public Access”

“The final results will be a well-organized collection stored in archival-quality boxes and files. Included with each box will be a finding aid listing all of the items within that box. A master finding aid will also be compiled.”

In order to accommodate Emily Smith, the project coordinator, the majority of work was completed before August 1, 2012. Thus far, all of our objectives have been addressed and completed.

Objective 1: reorganize the collections as needed (group like items together, locate loose items in appropriate boxes). A general overview of the collection was completed during Phase One. The information gathered during Phase One was utilized to evaluate which boxes were most likely to glean the best resources and should therefore be a priority. Eight boxes were identified and reorganized by item type and date. Please see attached finding aid and box overview.

Objective 2: scan disorganized slides in order to identify and determine correct placement in collection. All known slides were gathered from the collection and sent to be digitized. After receiving the slides back, with CDs of all the images, the slides were placed into a single box with a finding aid. The images were then relabeled in order to reflect the finding aid in addition to the existing “Retrospective” key that was compiled during Cain Park’s 50th anniversary. These images can now be easily added to Cleveland Memory Project’s website during our anticipated Phase Three.

Objective 3: place the collection in archival folders/boxes starting with the oldest/most deteriorated materials first. The materials identified as high priority have been placed in new archival folders and boxes. All new boxes are well marked with permanent archival labels.

Objective 4: winnow the collection (remove multiple copies of items and put in safe storage); update finding aids to reflect the reorganization of materials. Some materials have been winnowed while the boxes were being sorted and reorganized. Now that we have a better understanding what our collection contains, winnowing can continue as the collection is digitized during Phase Three. Additionally, finding aids have been created and will greatly assist in the location of materials, as well as, providing researchers a solid understanding of what our collection contains. Please see attached finding aid.

Objective 5: create a plan, time table and possible funding resources for Phase Three: Digitization/Public Access". Phase Three objectives are as follows:

Phase Three: Digitization and Public Access [future phase] will focus on scanning materials of public interest and uploading them to Cleveland State University's Cleveland Memory Project, an online database of photos, postcards and other highly visual material related to the Greater Cleveland area.

Phase Three will:

- determine what digital information already exists related to Cain Park (newspapers, photographs, programs) to avoid digitizing/uploading overlapping materials;
- determine priority of materials to digitize;
- scan photographs, programs, advertisements, and other materials of public interest with the help of volunteers, interns and the Cleveland Heights-University Heights Library;
- digitize slides, photo reels, vinyl records, VHS tapes, and other materials that are currently stored on outdated technologies;
- upload digital copies of materials to Cleveland Memory Project; and
- advertise the newly organized and digitized Cain Park collection.

Now that the majority of Phase Two is complete, we have begun looking for additional funds to complete Phase Three, including grants from the Ohio Historic Records Advisory Board and the Ohio Historical Society History Fund. Some materials that have been deemed worthy of Cain Park's 75th anniversary exhibit next year have already been scanned. Additional materials included in the 2013 exhibit will be also be scanned as needed. Along with the slides that have been digitized, these materials will be ready to be added to Cleveland Memory Project. Steps have already been taken to inform the public of the reorganization of the Cain Park records and hopefully this will stir added interest for Cain Park. Once funding has been secured, an accurate time table can be created to reflect the scope of work outlined in Phase Three.

Overall, Phase Two has been a successful venture and the City of Cleveland Heights looks forward to continuing this project. In fact, we are meeting with consultants next week to review

Finding Aids

Finding Aid

OVERVIEW

Series 1 Scrapbooks (14 boxes)

1.1	1941-1945	Scrapbook 1941-1948, Scrapbook 1940, Scrapbook 1942, Scrapbook 1945
1.2	1944	Scrapbook 1944
1.3	1946	Children's Theatre Scrapbook 1946, Scrapbook 1946
1.4	1947	Scrapbook 1947
1.5	1948-1949	Scrapbook 1948, Scrapbook 1949
1.6	ca. 1950- 1970s	Personal Scrapbook of Ethel Marshall, Scrapbook 1950
1.7	1953	Children's Theatre Scrapbook 1953
1.8	1954	Children's Theatre Scrapbook 1954
1.9	1957	Youtheatre Scrapbook 1957
1.10	1958-1959	Scrapbook 1958, Youtheatre Scrapbook 1959
1.11	1958-1960	Scrapbook 1958-1960
1.12	1968-1969	Scrapbook 1968, Scrapbook 1969
1.13	1973-1975	Scrapbook 1973-1975
1.14	1976-1977	Scrapbook 1976, Scrapbook 1977

Series 2 Slides (1 box)

2.1	1934-1988	50 th Anniversary Retrospective plus slides of other productions
-----	-----------	---

Series 3 Programs (2 boxes)

3.1	1934-1947	Mostly complete sets of programs from each year
3.2	1947-1996	Incomplete sets of programs, majority are from 1956 and earlier

Series 4 Photos (4 boxes)

4.1	1937-1942	Staff photos(all years); Photos of performances, players and crew members
4.2	1942-1945	Photos of performances, players and crew members
4.3	1945-1966	Photos of performances, players and crew members; Photos of other events held at park (all years); Photos of buildings (all years)
4.4	1939-1961	Theatre School photos and productions
4.5		Small oversized and matted photos
4.6		Large oversized and matted photos

Series 1 – Scrapbooks



Finding Aid

Series 2 - Slides (see Appendix A)

[illegible]

Shaded = in individual box.

Finding Aid

Series 4 – Photos

NUMBER	YEAR	DESCRIPTION
4.1	1937-1942	Staff photos(all years); Photos of performances, players and crew members
		STAFF
		Dr. Dina Rees Evans
		Sydney Spayde
		John McGee
		Handel Wadsworth
		Kenneth Graham
		Marvin Kline
		PRODUCTIONS
	Ca. 1940s-1950s	Photos
	Ca. 1940s-1950s	Players
	Ca. 1940s-1950s	Performances
	Ca. 1940s-1950s	Stagehands and Crew
	Ca. 1940s-1950s	Set Design
	1937	Players
	1938	WARRIOR'S HUSBAND
	1939	Photos
	1939	Players
	1939	Performances
	1939	Set Design
	1939	AARON SLICK
	1939	ELIZABETH, THE QUEEN
	1939	HIGH TOR
	1939	JOURNEY'S END
	1939	MY MARYLAND
	1939	PEER GYNT
	1939	THE IMPORTANCE OF BEING EARNEST
	1939	TWELFTH NIGHT
	1940	Photos
	1940	Players
	1940	FASHION
	1940	JULIUS CAESAR
	1940	MARY OF SCOTLAND

[illegible]

4.2	1942-1945	Photos of performances, players and crew members
	1942	Photos
	1942	Players
	1942	AH, WILDERNESS
	1942	H.M.S. PINAFORE
	1942	IN TIME TO COME
	1942	PETER PAN
	1942	RIGHT YOU ARE
	1942	RIO RITA
	1942	SHE LOVES ME NOT
	1942	THE MAN WHO CAME TO DINNER
	1942	THE MOON IS DOWN
	1942	VAGABOND KING
	1943	Players
	1943	CLAUDIA
	1943	GONDOLIERS
	1943	LOST HORIZON
	1943	ONE SUNDAY AFTERNOON
	1943	PERSONAL APPEARANCE
	1943	POST ROAD
	1943	SMILIN' THROUGH
	1943	SWEETHEARTS
	1943	THE OLD HOMESTEAD
	1943	FIREFLY
	1944	Players
	1944	Stagehands and Crew
	1944	ARSENIC AND OLD LACE
	1944	DECISION
	1944	JANIE
	1944	NO, NO NANETTE
	1944	PAPA IS ALL
	1944	SCHOOL FOR HUSBANDS
	1944	BABES IN TOYLAND
	1944	DESERT SONG
	1944	GREEN GROW THE LILACS
	1944	CHOCOLATE SOLDIER
	1945	Players
	1945	Stagehands and Crew
	1945	CAMILLE OF ROARING CAMP
	1945	HARRIET
	1945	KATINKA
	1945	MORE LOVE, BROTHER
	1945	OVER TWENTY ONE
	1945	SNAFU
	1945	THE PHILADELPHIA STORY

[illegible]

4.3	1945-1966	Photos of performances, players and crew members; Photos of other events held at park (all years); Photos of buildings (all years)
	1946	Players
	1946	FARMER TAKES A WIFE
	1946	JACOBOWSKY
	1946	R.U.R
	1946	ROBIN HOOD
	1946	ROOM SERVICE
	1946	WEEP NO MORE
	1946	MIKADO
	1946	NEW MOON
	1946	WARRIOR'S HUSBAND
	1946	OF THEE I SING
	1947	Photos
	1947	Players
	1947	Set Design
	1947	BARBER AND THE COW
	1947	DREAM GIRL
	1947	MANANA
	1947	OUR TOWN
	1947	ROSE MARIE
	1947	SARI
	1947	STUDENT PRINCE
	1947	TOO MANY GIRLS
	1947	YOU CAN'T TAKE IT WITH YOU
	1947	SING OUT SWEET LAND
	1948	Photos
	1948	Players
	1948	Stagehands and Crew
	1948	BLOSSOM TIME
	1948	I REMEMBER MAMA
	1948	LADY IN THE DARK
	1948	LUTE SONG
	1948	PYGMALION
	1948	RELUCTANT LADY
	1948	THE TAMING OF SHREW
	1948	BABES IN TOYLAND
	1948	KNICKERBOCKER HOLIDAY
	1948	THE CHIMES OF NORMANDY
	1949	Photos
	1949	Players
	1949	BLITHE SPIRIT
	1949	CRAZY GIRL
	1949	LOOK MA, I'M DANCIN'

[illegible]



[illegible]



[illegible]

Finding Aid

Series 3 - Programs

NUMBER	YEAR	DESCRIPTION (QUANTITY)
3.1	1934-1947	Mostly complete sets of programs from each year
	1934	MIDSUMMERS NIGHT'S DREAM (3) - May 25-26
	1938	Community Concert Band (1) - August 31
	1939	Week of June 18 (1)
		Week of June 25 (1)
		Week of July 2 (5)
		Week of July 9 (5)
		Week of July 16 (2)
		Week of July 23 (7)
		Week of July 30 (8)
		Week of August 6 (8)
		Week of August 13 (6)
	1940	Week of June 23 (3)
		Week of June 30 (1)
		Week of July 7 (4)
		Week of July 14 (4)
		Week of July 21 (5)
		Week of July 28 (5)
		Week of August 4 (5)
		Week of August 11 (4)
		Week of August 18 (6)
		One Act Plays and Programs (2) – August 10-23
	1941	Week of June 22 (6)
		Week of June 29 (6)
		Week of July 6 (5)
		Week of July 13 (5)
		Week of July 20 (8)
		Week of July 27 (7)
		Week of August 3 (8)
		Week of August 10 (2)
		Week of August 17 (5)
	1942	RED ARMY (1) – March 26
		Program: The week of June 22 (4)
		Program: The week of June 28 (5)
		Program: The week of July 5 (3)
		Program: The week of July 12 (5)
		Program: The week of July 19 (2)
		Program: The week of July 26 (4)

		Program: The week of August 2 (6)
		Program: The week of August 2 - photocopy
		Program: The week of August 9 (4)
		Program: The week of August 23 (4)
	1943	Program: The week of June 20 (1)
		Program: The week of June 27 (4)
		Program: The week of July 4 (4)
		Program: The week of July 11 (4)
		Program: The week of July 18 (4)
		Program: The week of July 25 (3)
		Program: The week of August 1 (4)
		Program: The week of August 8 (4)
		Program: The week of August 15 (5)
		Program: The week of August 22 (4)
	1944	Program: The week of June 18 (3)
		Program: The week of June 25 (5)
		Program: The week of July 2 (3)
		Program: The week of July 9 (4)
		Program: The week of July 16 (3)
		Program: The week of July 23 (4)
		Program: The week of July 30 (4)
		Program: The week of August 6 (4)
		Program: The week of August 13 (5)
		Program: The week of August 20 (3)
	1945	Program: The week of June 17 (5)
		Program: The week of June 24 (5)
		Program: The week of July 1 (4)
		Program: The week of July 8 (3)
		Program: The week of July 15 (4)
		Program: The week of July 22 (4)
		Program: The week of July 29 (4)
		Program: The week of August 5 (5)
		Program: The week of August 12 (3)
		Program: The week of August 19 (2)
	1946	Program: The week of June 18 (3)
		Program: The week of June 25 (7)
		Program: The week of July 2 (5)
		Program: The week of July 9 (5)
		Program: The week of July 16 (6)
		Program: The week of July 23 (7)
		Program: The week of July 30 (5)
		Program: The week of August 6 (6)
		Program: The week of August 13 (4)
		Program: The week of August 20 (6)

[illegible]

		Program: The week of July 5 (3)
		Program: The week of July 12 (2)
		Program: The week of July 19 (4)
		Program: The week of July 26 (3)
		Program: The week of August 2 (6)
		Program: The week of August 9 (4)
		Program: The week of August 16 (3)
	1950	MIDSUMMER NIGHT'S DREAM (6)
		BRIGADOON – Week Three (2)
		BRIGADOON – Week Four (3)
		GREEN GROW THE LILACS – Week Six (2)
		THE BARTERED BRIDE – Fourth Show (3)
		THE BARTERED BRIDE – Week Eight (3)
	1951	RED MILL – Week 1 (7)
		ON THE TOWN – Week Three (2)
		ON THE TOWN – Week Four (1)
		BITTERSWEET – Week Five (2)
		BITTERSWEET – Week Six (2)
		DESERT SONG – Week Eight (1)
	1952	SHOW BOAT – Week Two (2)
		NAUGHTY MARIETTA – Week Three (2)
		THE CHOCOLATE SOLDIER – Week Five (1)
		THE CHOCOLATE SOLDIER – Week Six (1)
		ANNIE GET YOUR GUN – Week Eight (2)
	1953	CAROUSEL – Week One (2)
		MERRY WIDOW – Week Three (1)
		MERRY WIDOW – Week Four (1)
		BRIGADOON – Week Five (1)
		KISS MY KATE - Week Seven (1)
	1954	HIGH BUTTON SHOES – Week Three (1)
		WIZARD OF OZ – Week Five (1)
		WIZARD OF OZ – Week Six (1)
		CALL ME MADAM – Week Seven (1)
	1955	GUYS AND DOLLS – Week One (1)
		THE VAGABOND KING – Week Four (2)
		WHERE'S CHARLEY – Week Six (1)
		WONDERFUL TOWN – Week Eight (1)
	1956	OF THEE I SING – Week Three (2)
		SING OUT SWEET LAND – Week Five (1)
	1964	THE KING AND I – photocopy
		BYE BYE BIRDIE – photocopy
		DAMN YANKEES (1)
	1965	ANNIE GET YOUR GUN– photocopy
		ANNIE GET YOUR GUN (1)
		BRIGADOON– photocopy
		ONE UPON A MATTRESS– photocopy

[illegible]

Finding Aid

Series 4 – Photos

NUMBER	YEAR	DESCRIPTION
4.1	1937-1942	Staff photos(all years); Photos of performances, players and crew members
		STAFF
		Dr. Dina Rees Evans
		Sydney Spayde
		John McGee
		Handel Wadsworth
		Kenneth Graham
		Marvin Kline
		PRODUCTIONS
	Ca. 1940s-1950s	Photos
	Ca. 1940s-1950s	Players
	Ca. 1940s-1950s	Performances
	Ca. 1940s-1950s	Stagehands and Crew
	Ca. 1940s-1950s	Set Design
	1937	Players
	1938	WARRIOR'S HUSBAND
	1939	Photos
	1939	Players
	1939	Performances
	1939	Set Design
	1939	AARON SLICK
	1939	ELIZABETH, THE QUEEN
	1939	HIGH TOR
	1939	JOURNEY'S END
	1939	MY MARYLAND
	1939	PEER GYNT
	1939	THE IMPORTANCE OF BEING EARNEST
	1939	TWELFTH NIGHT
	1940	Photos
	1940	Players
	1940	FASHION
	1940	JULIUS CAESAR
	1940	MARY OF SCOTLAND



4.2	1942-1945	Photos of performances, players and crew members
	1942	Photos
	1942	Players
	1942	AH, WILDERNESS
	1942	H.M.S. PINAFORE
	1942	IN TIME TO COME
	1942	PETER PAN
	1942	RIGHT YOU ARE
	1942	RIO RITA
	1942	SHE LOVES ME NOT
	1942	THE MAN WHO CAME TO DINNER
	1942	THE MOON IS DOWN
	1942	VAGABOND KING
	1943	Players
	1943	CLAUDIA
	1943	GONDOLIERS
	1943	LOST HORIZON
	1943	ONE SUNDAY AFTERNOON
	1943	PERSONAL APPEARANCE
	1943	POST ROAD
	1943	SMILIN' THROUGH
	1943	SWEETHEARTS
	1943	THE OLD HOMESTEAD
	1943	FIREFLY
	1944	Players
	1944	Stagehands and Crew
	1944	ARSENIC AND OLD LACE
	1944	DECISION
	1944	JANIE
	1944	NO, NO NANETTE
	1944	PAPA IS ALL
	1944	SCHOOL FOR HUSBANDS
	1944	BABES IN TOYLAND
	1944	DESERT SONG
	1944	GREEN GROW THE LILACS
	1944	CHOCOLATE SOLDIER
	1945	Players
	1945	Stagehands and Crew
	1945	CAMILLE OF ROARING CAMP
	1945	HARRIET
	1945	KATINKA
	1945	MORE LOVE, BROTHER
	1945	OVER TWENTY ONE
	1945	SNAFU
	1945	THE PHILADELPHIA STORY



4.3	1945-1966	Photos of performances, players and crew members; Photos of other events held at park (all years); Photos of buildings (all years)
	1946	Players
	1946	FARMER TAKES A WIFE
	1946	JACOBOWSKY
	1946	R.U.R
	1946	ROBIN HOOD
	1946	ROOM SERVICE
	1946	WEEP NO MORE
	1946	MIKADO
	1946	NEW MOON
	1946	WARRIOR'S HUSBAND
	1946	OF THEE I SING
	1947	Photos
	1947	Players
	1947	Set Design
	1947	BARBER AND THE COW
	1947	DREAM GIRL
	1947	MANANA
	1947	OUR TOWN
	1947	ROSE MARIE
	1947	SARI
	1947	STUDENT PRINCE
	1947	TOO MANY GIRLS
	1947	YOU CAN'T TAKE IT WITH YOU
	1947	SING OUT SWEET LAND
	1948	Photos
	1948	Players
	1948	Stagehands and Crew
	1948	BLOSSOM TIME
	1948	I REMEMBER MAMA
	1948	LADY IN THE DARK
	1948	LUTE SONG
	1948	PYGMALION
	1948	RELUCTANT LADY
	1948	THE TAMING OF SHREW
	1948	BABES IN TOYLAND
	1948	KNICKERBOCKER HOLIDAY
	1948	THE CHIMES OF NORMANDY
	1949	Photos
	1949	Players
	1949	BLITHE SPIRIT
	1949	CRAZY GIRL
	1949	LOOK MA, I'M DANCIN'

[illegible]

[illegible]

[illegible]

[illegible]



CAIN PARK THEATER SLIDES - "Retrospective" series (5 boxes)

Box # 1 1934-1952

1. The Park's Birth, etc. (Title)
2. Program cover: "Midsummer Night's Dream"
3. Terrace constüction.
4. Park entry ramp construction.
5. Orchestra pit construction.
6. Stage excavation.
7. " " from colonade.
8. Covering the creek.
9. Terrace construction w/ tower.
10. Early program cover motif.
11. Program: "Warrior's Husband".
12. Cast: " "
13. Park: front gate.
14. Doc. Evans circa 1940.
15. G. Gentile and crew.
16. Wm. Winters.
17. Program cover -1939
18. Program title page: "High Tor".
19. Cast members: " "
20. Set: " "
21. Aeorobics on the terrace,
22. Cast: "Peer Gynt".
23. Program title page: "My Maryland".
24. Full cast: " "
25. Two leads: " "
26. Set: "Importance of Being Earnest"
27. Rehearsal: " " " "
28. Park opening ceremonies.
29. Children on terrace.
30. Rehearsal on stage: "Earnest".
31. " " " "
32. Performance: " "
33. Cast: "Jouney's End ".
34. Set: " "
35. Set: "Earnest".
36. Rehearsal: " "
37. Cast: "Elizabeth the Queen ".
38. " " " "
39. Rehearsal: " " " out doors.
40. " " " "
41. Rehearsal: "Mary of Scotland"
42. Nadine Miles as "Mary".
43. B. Weiss & company: crew.
44. Painting: Schreckengist's set for "Divorsons".
45. Program cover: July 7-1940.
46. " title page: "Prologue to Glory".
47. At party: Marta Abba' estate.
48. Syd. Spayde: Lincoln make-up.
49. Program title page: "Cradle Song".
50. Cast: "Cradle Song"
51. Set: " "
52. Crewman back stage.
53. Chorus: "Knickerbocker Holiday
54. G. Gentile.
55. Program title page: "Divorson: "
56. On stage: " "
57. " " w/ M. Abba- " "
58. " " " "
59. Doc. Evans and M. Abba.
60. Program title: "Pinafore"
61. Leads on stage: " "
62. Ship's rigging: " "
63. Program title page: "Peter Par
64. L. Lytton as Hook: " "
65. Hook's crew: " "
66. Program title page: "Rio Rita".
67. Bette Thomson- " "
68. Program title page: "Rose Marie"
69. Program cover: Aug. 15-1943.
70. Kid's party: on terrace.
71. Back stage -crew.
72. Program cover: June 18,-1944.
73. Program title page: "Firefly".
74. Full cast: " "
75. Program title page: "Arsenic and Old Lace".
76. Cast on stage: " "
77. Robley Evans: as Teddie " "
78. " " " "
80. " " " "

CAIN PARK THEATER SLIDES - "Retrospective" series (5 boxes)

Box # 2 1942-1950

1. Program title page: "Vagabond King"
2. W. Boehm, W. Walton: " " "
3. Program title page: "School for Husbands"
4. Performance: " " " "
5. Rehearsal: "No, No, Nanette"
6. Program title page: "In Time to Come"
7. Shipboard scene: " " " "
8. Syd. Spayde & tech boss.
9. Lighting crew circa 1945.
10. Program title page: "Chocolate Soldier"
11. Performance: chorus " " "
12. Group crew - circa 1946.
13. N. McDonald and construction crew.
14. Three dancers from operetta group.
15. A. Bower & Dina Evans in costume.
16. Production staff circa 1947.
17. Full cast: "Katinka"
18. Performance: "Camille of Roaring Camp."
19. Doc. Evans- circa 1948.
20. Performance: "Harriet".
21. Leads: "Countess Maritza"
22. Program title page: "Lady in the Dark"
23. Rehearsal: " " " "
24. Audience in amphitheater.
25. Program title page: "New Moon"
26. Tavern scene: " " "
27. Ballroom " " "
28. Shipboard " " "
29. Lead couple: " " "
30. " " "
31. P. T. Barnum & Co. "Weep No More".
32. Staff: circa 1947.
33. Performance: "R.U.R. "
34. B. Lange & Co. "Robin Hood"
35. Set: "Weep No More".
36. Performance: "Of Thee I Sing"
37. " " " " "
38. Crew member.
39. Program cover: July 1, 1947.
40. Crew meeting.
41. G. Hanning, W. Schneider "Dream Girl."
42. Crew cavort in flood.
43. J. Lee & Co. "New Moon".
44. Staff w/ S. Spayde.
45. Childrens Theater class.
46. Ballet scene "Student Prince"
47. Program title page: "Taming of the Shrew"
48. H. Forcythe & wife: " "
49. Program title page: "I Remember Mama"
50. Set: " " "
51. Revolving set for " " "
52. " " "
53. " " "
54. Performance " " "
55. Childrens Theater perf.
56. " " class
57. " " "
58. Program title page: "Pygmalion"
59. Program cover: June -1948
60. Program title page: "Babes in Toyland"
61. Set: " " "
62. Performance: "Chimes of Normandy"
63. Set: "Babes in Toyland"
64. Performance: Reluctant Lady"
65. Program title page: "Lute Song"
66. Scene: " " "
67. Out door rehearsal.
68. Program title page: St. Joan"
69. Scene: " " "
70. " " "
71. " " "
72. Scene: "Too Many Girls".
73. R. Graham for & puppet.
74. Set: "Bartered Bride"
75. Program Cover: Brigadoon"
76. R. Englehart, P. Ruhl: " "
77. Performance: " "
78. " " "
79. Finale: " "
80. Bagpipers- "

CAIN PARK THEATER SLIDES - "Retrospective" series (5 boxes)

Box #3 1950-1964

1. Program cover: "Bartered Bride".
2. Scene: " "
3. Ensemble: " "
4. " " "
5. Program cover: "Red Mill".
6. Chorus trio: " "
7. Performance: " "
8. Program Cover: " Show Boat".
9. Full cast: " "
10. M. Kline & Co.
11. Trio: "Midsummer Night's Dream"
12. Performance: " " "
13. Program cover: "High Button Shoes"
14. Performance: " " "
15. " " "
16. " " Gentlemen Prefer Blondes"
17. New Alma construction
18. " " "
19. Program cover: "Kiss me, Kate"
20. " " "Merry Widow".
21. " " "On the Town"
22. " " "Bittersweet"
23. " " "Desert Song"
24. " " "Vagabond King"
25. Ad. "Finian's Rainbow"
26. Program cover: "Guys and Dolls"
27. " " "Annie Get Your Gun"
28. " " "Call Me Madam"
29. " " "Of Thee I Sing"
30. Performance: " " " "
31. Preparing for flooring stage.
32. Installing flooring w/ performers.
33. Brochure: 1952 season.
34. Performance "The Poor Nut".
35. Program cover: "The Chocolate Soldier"
36. " " "Naughty Marietta"
37. " " "Wonderful Town"
38. C.P. house.
39. Performance: "Paint Your Wagon"
40. " " " "
41. Un-painted set: "Wonderful Town"
42. Performance: "Sing Out, Sweet Land"
43. " " " "
44. " " "Finian's Rainbow"
45. " " "
46. Doc. Evans circa 1950
47. View from right tower.
48. Doc. Evans and friends
49. " " "
50. " " "
51. Rehearsal in Alma.
52. Title: Sammy Davis Jr.
53. Stage w/ light curtain.
54. Back stage.
55. Sammy Davis Jr. & friends.
56. " " "
57. Harry Belafonte poster.
58. Johnny Mathis.
59. Bob Hope.
60. Performance: "Mikado.
61. Title: "The 1960's"
62. Performance:
63. Jerry Leonard & Co.
64. Exercise class.
65. Program cover: "Best Foot Forward"
66. " " "Once Upon a Mattress"
67. Performance: "Music Man".
68. " " " "
69. "West Side Story" Pub.
70. Performance: "Gypsy"
71. Rehearsal:
72. Performance: "Bye, Bye, Birdie"
73. Program cover: "Guys and Dolls"
74. Performance: "Music Man"
75. Johnny Crawford.
76. Program cover: "Oklahoma"
77. Performance: "Bye, Bye, Birdie"
78. " " " "
79. Program cover: " " " "
80. Performance: " " " "

CAIN PARK THEATER SLIDES - "Retrospective" series (5 boxes)

Box # 4 -1964-1976

1. Johnny Crawford.
2. Program: "Sound of Music"
3. " " "Brigadoon"
4. " " "Music Man"
5. " " "The King and I"
6. " " "Annie Get Your Gun"
7. Performance: "Bye, Bye, Birdie"
8. Program: "Finian's Rainbow"
9. Performance: "Sound of Music"
10. Program: "Damn Yankees"
11. Performance: "Bye, Bye, Birdie"
12. " " " " "
13. " " " " "
14. " " "West Side Story"
15. Pub. portrait: M. Kline-circa 1904
16. TITLE: "the 1970's"
17. Poster: "A Funny Thing Happened..."
18. Two leads:
19. Poster: "Death of a Salesman".
20. Performance: " " " " "
21. Program: "All the King's Men"
22. Performance: " " " " "
23. " " " " "
24. Program: "The Fantasticks".
25. " " "Celebration"
26. Performance: " " "
27. " " " " "
28. " " " " "
29. " " " " "
30. " " " " "
31. Performance: "Pippin".
32. " " "Celebration"
33. Program: "The Rainmaker"
34. Performance: " " "
35. " " " " "
36. " " " " "
37. " " " " "
38. " " " " "
39. Program: "Come Back, Little Sheba"
40. Performance: " " " " "
41. Evie Macelroy.
42. Set construction: The Alma.
43. " " " w/ C. Columbi
44. " " " " "
45. " " " " "
46. Performance: "Our American Cousin"
47. Audience: " " " "
48. Perf. " " " "
49. P.D. article: C.P. Benefit.
50. Program: Benefit: "Straw Hat & Ca"
51. " " " " "
52. " " " " "
53. Leads: "3 Men on a Horse"
54. Program: "Solid Gold Cadillac"
55. Performance: " " " "
56. " " " " "
57. " " "Animal Farm"
58. Poster: " " " "
59. Program: "Damn Yankees"
60. " " "Philemon"
61. " " " " "

CAIN PARK THEATER SLIDES -"Retrospective" series (5 boxes)

Box # 5 1976-1988

1. TITLE: "The 1980's"
2. 1976- Lead: "Anyone Can Whistle"
3. Cast: " " " "
4. " " " "
5. " " " "
6. " " " "
7. Prortrait: C. Columbi
8. Set construction: The Alma
9. " " "Candide"
10. Performance: " "
11. " " "
12. " " "
13. " " "
14. " " "
15. " " "
16. " " "
17. The Colonade
18. The stage from Colonade.
19. Program: "Dear World"
20. Poster: "Cabdide"
21. Poster: Premiere: "Those Lips..."
22. Period cabs-props. " "
23. Poster: "Cyrano"
24. " " "Camelot"
25. Performance: " "
26. " " "Man of La Mancha"
27. " " " " "
28. " " " " "
29. Poster: "Sweeney Todd"
30. Lead: "Le Grande de Coca Cola"
31. Performance: " " " "
32. " " " " "
33. " " " " "
34. " " " " "
35. " " " " "
36. " " " " "
37. Lead: "Camelot"
38. Performances: " "
39. " " "
40. " " "
41. Performance: "Camelot"
42. " " "
43. " " "
44. Poster: Arts Festival VI
45. " " " "
46. " " " "
47. Poster: "Houdini"
48. " " "Herringbone"
49. " " "Archy & Mehitabel.
50. " " "Pippin"
51. Program: "El Grande de Coca Cola"
52. Poster: "The Baker's Wife", "Cabaret"
53. Leads: "Gypsy"
54. Poster: "Gypsy"
55. " " "Evita"
56. " " "Pacific Overtures"
57. Performance: " " "
58. " " " "
59. " " " "
60. View: The Alma.
61. Doc. Evands -1988
62. Performance: "Pacific Overtures"
63. " " " "
64. " " " "
65. Park logo for 1986
66. " " " 1987
67. Brochure cover for 1987
68. Poster: Ohio Ballet.
69. Poster-logo: "Nine"
70. Brochure cover- 1988
71. Logo--1988
72. Jerry Leonard.
73. TITLE: Dancing under the stars.
74. " : Sing-a-long
75. Lyrics to "Someday"
76. " " "
77. " " "
78. " " "
79. Park 50th logo
- 80.

CAIN PARK THEATER SLIDES

Box #6 -Unmounted, i.e., NOT arranged in a Kodak Carousel slide tray:

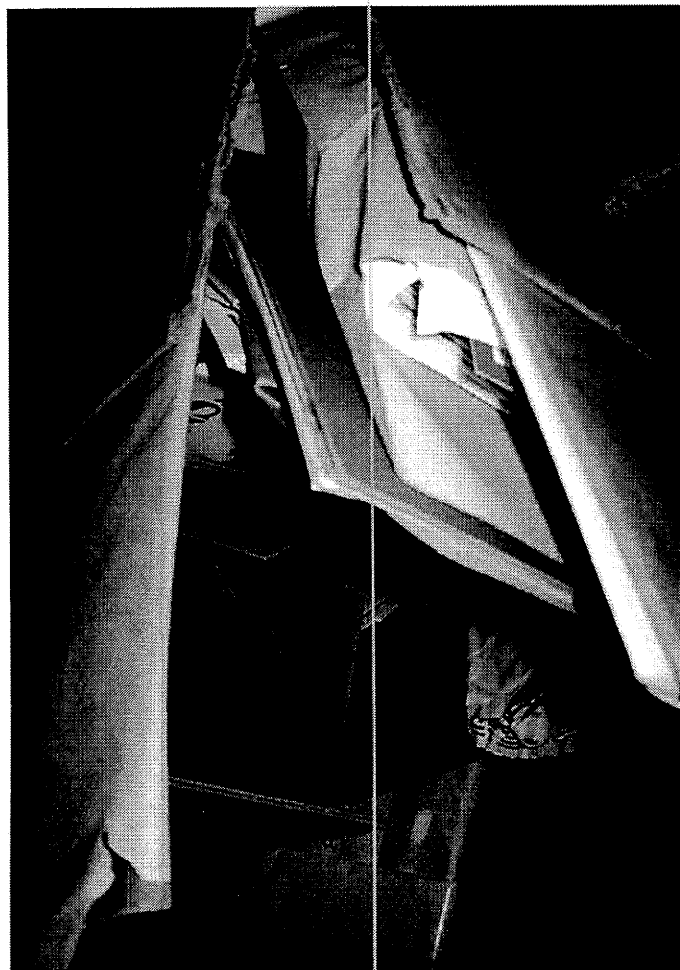
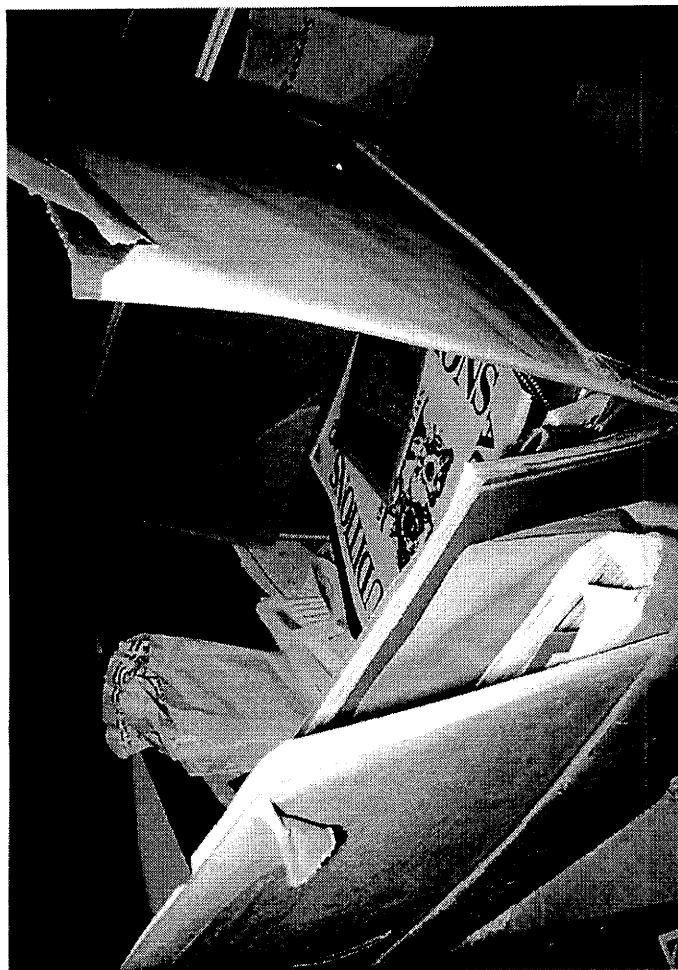
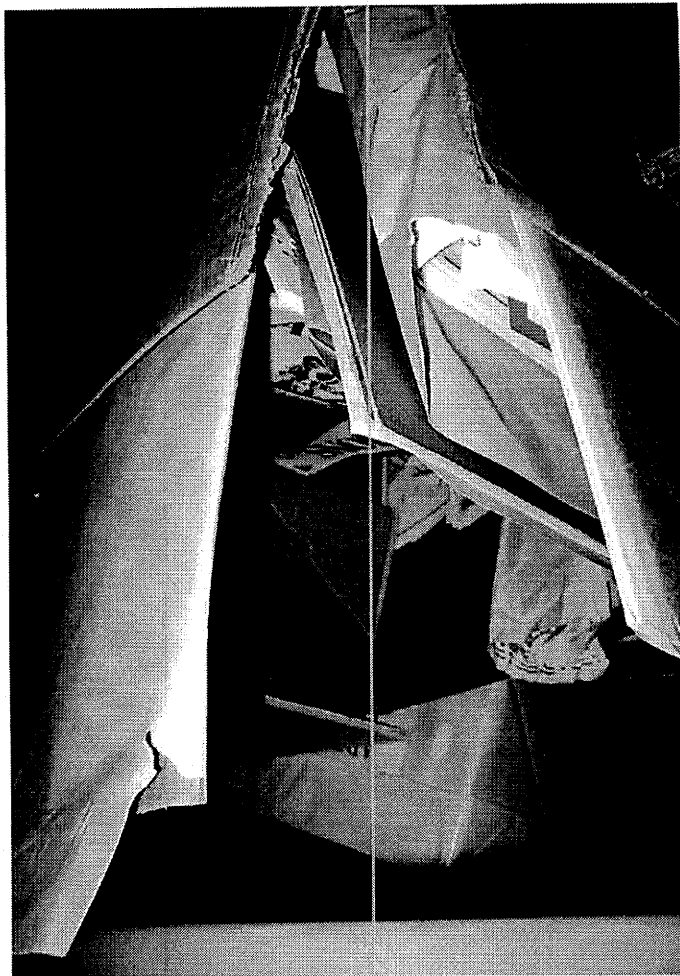
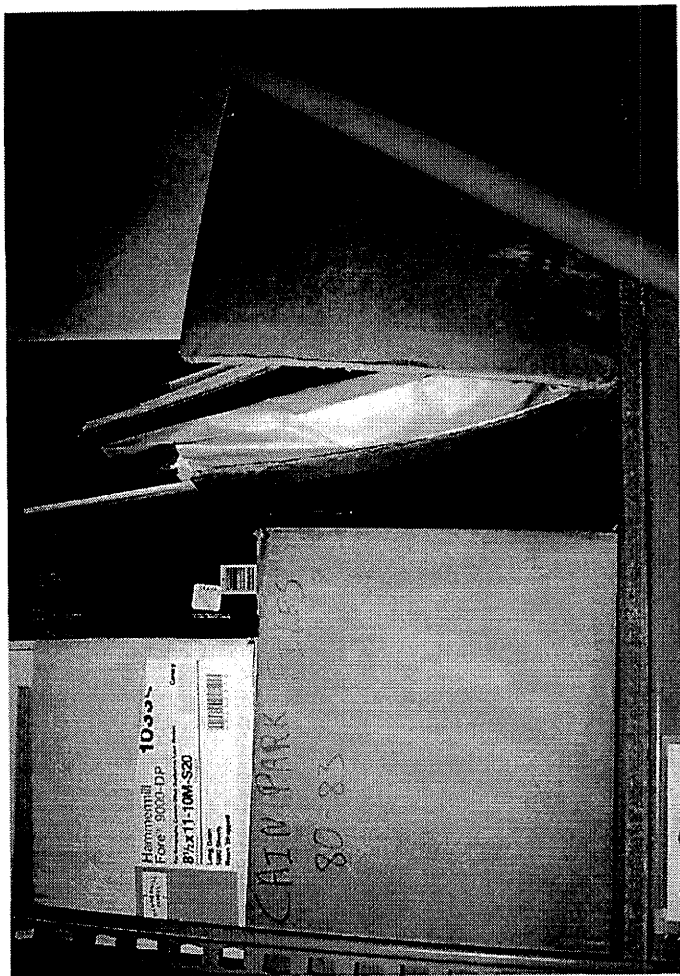
Misc. extra, duplicate and/or inferior shots of
Cain Park personnel, rehearsals, sets and performances.

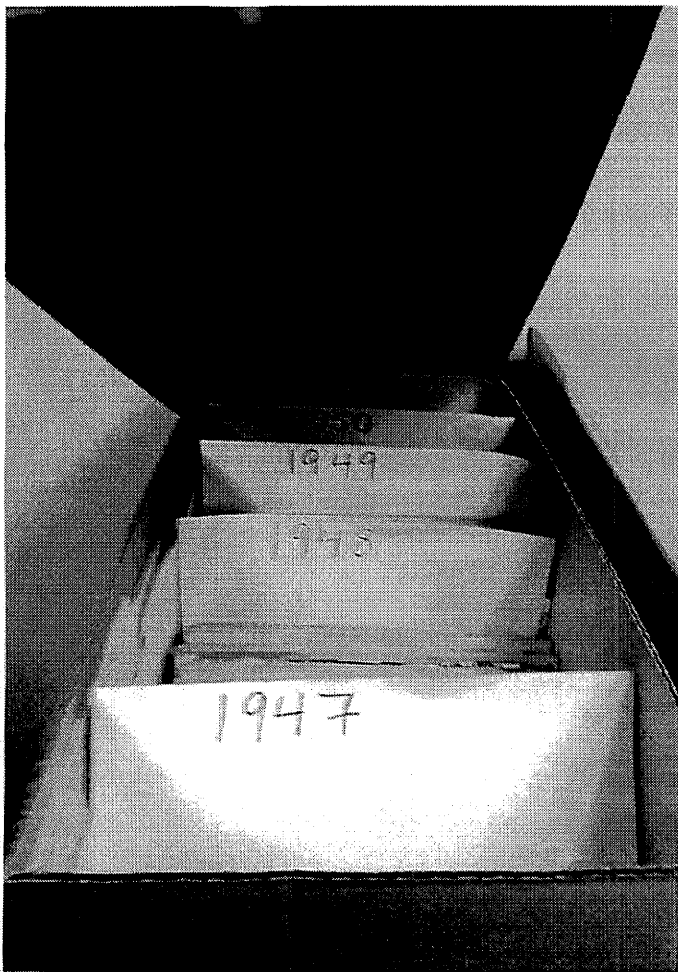
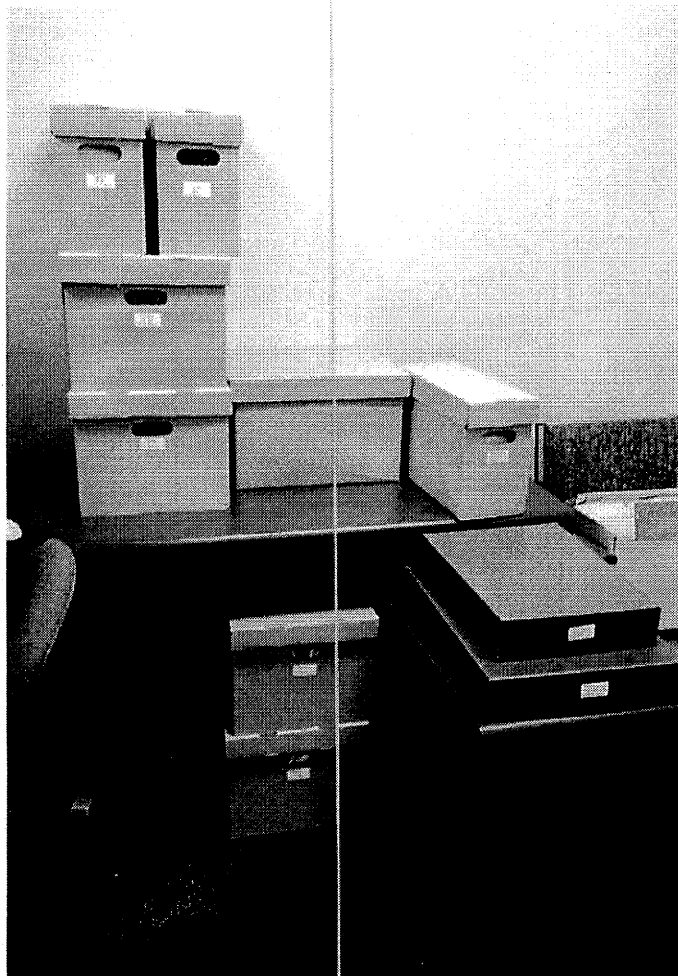
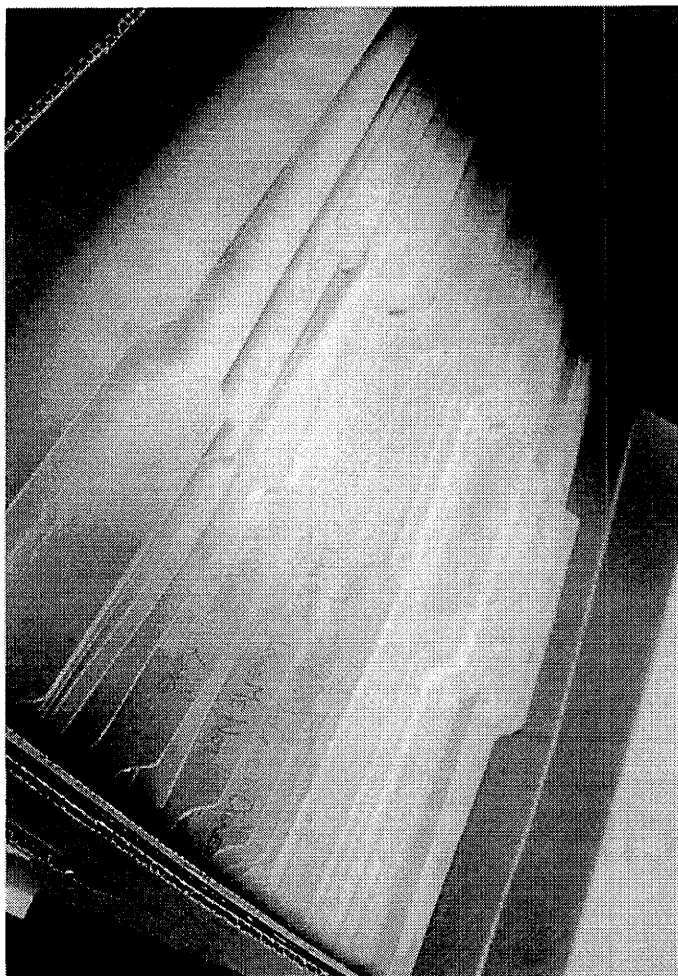
Includes:

- Shots arranged chronologically 1942-1950
- Production shots 1972 -general recreation
- Misc. rehearsal shots 1973
- 2 boxes slides of "In White America"
- 1- box "ThreeMen on a Horse"
- 1 box misc. 1978
- 1 box crew- 1978
- 1 box "Absent Forever"
- 1 box "Camelot"
- 4 boxes "The Man of La Mancha"
- 1 box "El Grande de Coca Cola"

Photographs

BEFORE ORGANIZATION





AFTER
ORGANIZATION

Publicity

FOCUS

ON CLEVELAND HEIGHTS OHIO

summer 2012

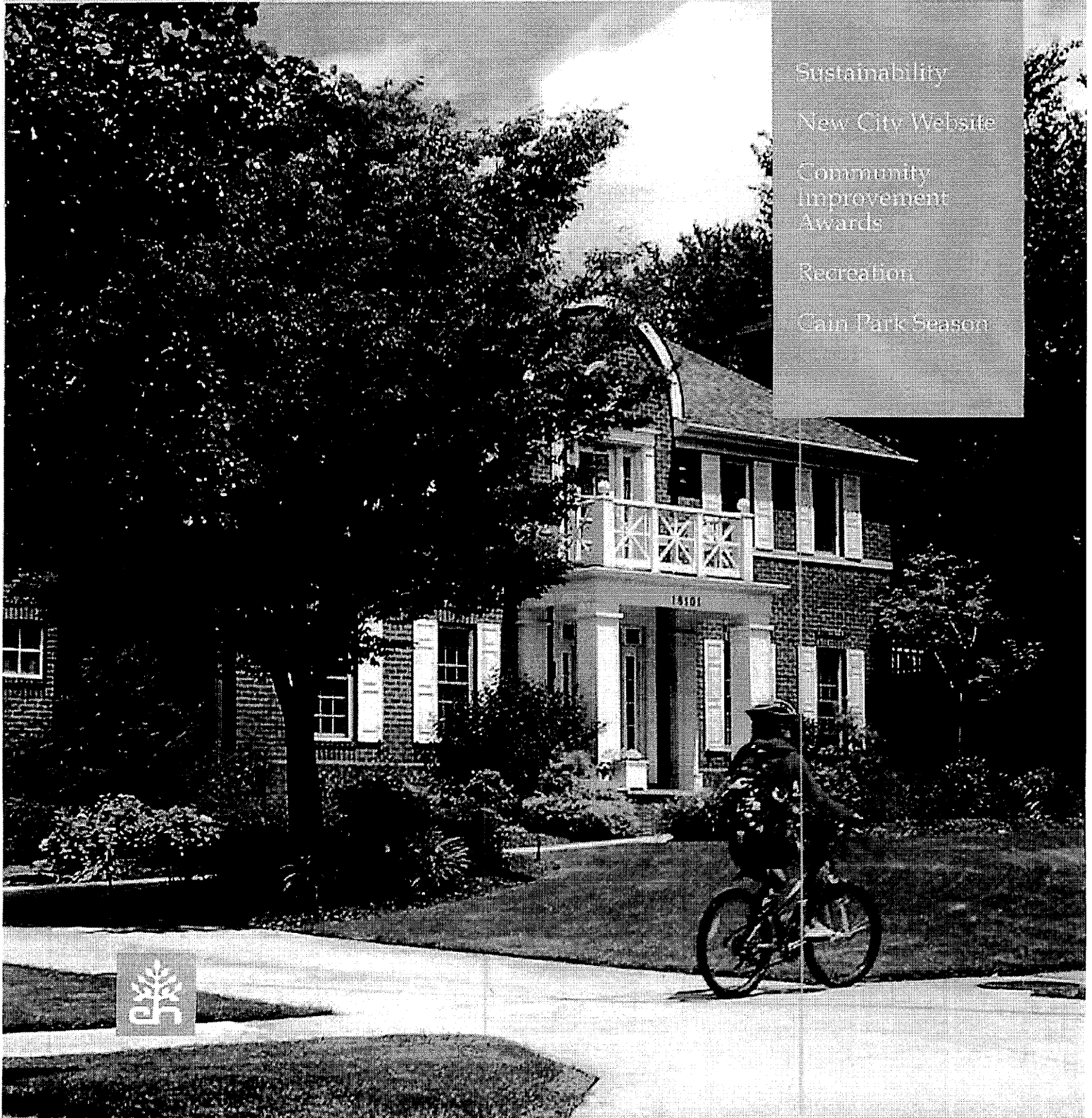
Sustainability

New City Website

Community
Improvement
Awards

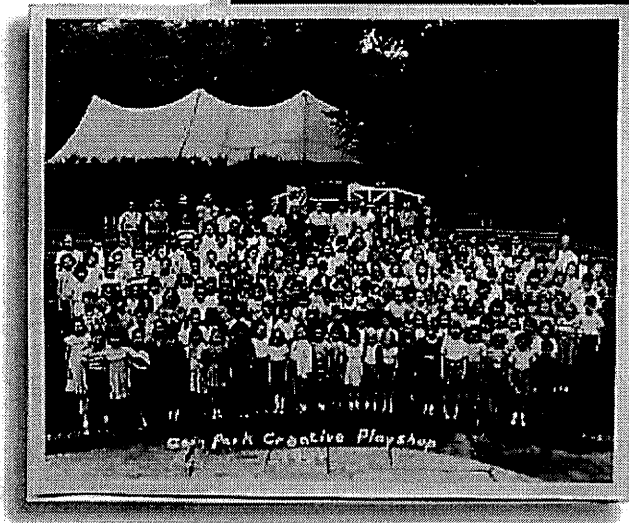
Recreation

Cain Park Season



Historic Heights

Appreciating our past, preserving our heritage



Cain Park archives being preserved

Emily Smith, graduate student in Historic Preservation at Ursuline College, has spent quite a bit of time in the City Hall basement delving into our City's past, specifically the rich history of Cain Park, which celebrates its 75th anniversary next year. Since its opening in 1938, Cain Park has hosted a multitude of plays, musicals, performances and concerts and is also home to the annual Cain Park Arts Festival (held this year on July 13, 14 and 15).

Ms. Smith, an intern in the Cleveland Heights Planning and Development Department, has been organizing and preserving the Cain Park archives, which contains over 40 boxes of records and materials that date earlier than 1970. The archives are also providing her with great research, as she is writing her master's thesis on Cain Park. This archival project was made possible thanks to a grant awarded by the Ohio Historical Records Advisory Board, through funding from the National Historical Publications and Records Commission, National Archives and Records Administration.

A general inventory of each box has been completed and the next step is to organize and store items in archival quality boxes and folders. Items range from administrative records to newspaper clippings to advertising posters. Photos, scrapbooks, slides and programs have been identified as the first priority due to their fragile condition as well as their public interest. Items are being organized by year and if possible by performance. In the near future they will also be digitized and added online.

A number of interesting photos have been unearthed during this process. Some are of live performances, some are staged publicity photos, while others are behind-the-scenes shots of crew and actors. There are also many photos from the Cain Park Children's Theatre. While there is still more to be done, over 800 photos and 23 scrapbooks have already been sorted and placed in archival boxes for safe storage. Some of the "finds" will be exhibited next year in the Audrey and Harvey Feinberg Art Gallery in Cain Park.

• If you have any historic photos, scrapbooks or video of Cain Park you would like to donate to the City's Cain Park collection, contact Kera O'Donnell at 216-291-4885 or kodonnell@clvhts.com.

Budget

OHRAB Grant Budget Form (REVISED 3/16/2012)

AUG 31 STATUS

Salaries and Wages (<i>list items</i>)	Grant Funds	Cash Match	TOTAL	
Smith, project coordinator, 150 hours @ \$10.00/hour	\$1,500		\$1,500	\$1,500
O'Donnell, management of program 20 hours @ \$30/hr		\$600	\$600	\$750
Cameron/Roschakovsky, assistance in program 5 hrs @ \$30/hr		\$150	\$150	\$150
Barrow, project guidance 4 hrs @ \$30/hr		\$120	\$120	\$120
Subtotals	\$1,500	\$870	\$2,370	\$2,520

Supplies (<i>list items</i>)	Grant Funds	Cash Match	TOTAL	
			\$0	
Archival boxes, paper, folders, etc.		\$1,000	\$1,000	\$1,072.21
paper, photocopying, printing		\$50	\$50	\$50
			\$0	
Subtotals	\$0	\$1,050	\$1,050	\$1,122.21

Equipment (<i>list items</i>)	Grant Funds	Cash Match	TOTAL	
			\$0	
			\$0	
			\$0	
			\$0	
Subtotals	\$0	\$0	\$0	

Contracted Services (<i>list items</i>)	Grant Funds	Cash Match	TOTAL	
			\$0	
			\$0	
			\$0	
			\$0	
Subtotals	\$0	\$0	\$0	

Other Eligible Expenses (<i>list items</i>)	Grant Funds	Cash Match	TOTAL	
			\$0	
			\$0	
			\$0	
			\$0	
Subtotals	\$0	\$0	\$0	

Summary Budget	Grant Funds	Cash Match	TOTAL	ACTUAL SPENDING
Salaries & Wages	\$1,500	\$870	\$2,370	\$2,520
Supplies	\$0	\$1,050	\$1,050	\$1,122.21
Equipment	\$0	\$0	\$0	
Contracted Services	\$0	\$0	\$0	
Other Eligible Expenses	\$0	\$0	\$0	
Total Project Costs	\$1,500	\$1,920	\$3,420	\$3,642

If you do not receive full funding, will you accept partial funding and still complete the project as outlined in the application?

Yes XXNo